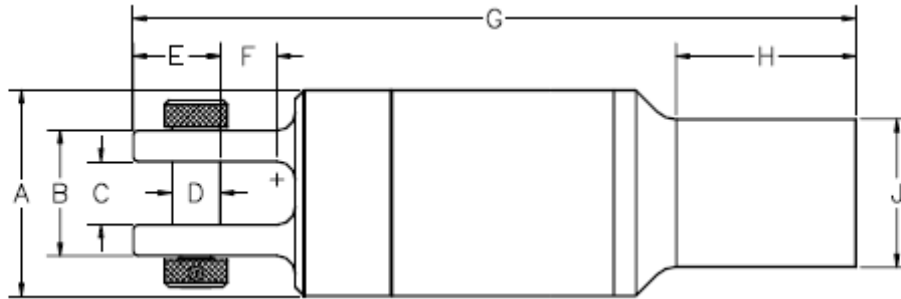




## Dub Swivel<sup>®</sup> API x Clevis



### Dub Swivels<sup>®</sup> – API x Clevis

Safe Working Limit	Ultimate Load	Box Thread	A	B	C	D	E	F	G	H	J	Net Weight	Part No.
30,000 lbs.	150,000 lbs.	2 3/8" IF API	4 3/4"	3 1/4"	1 3/4"	1 1/8"	2 1/16"	1 7/16"	19 1/4"	4 5/8"	3 3/8"	96 lbs.	3-00508-115C
40,000 lbs.	200,000 lbs.	2 3/8" IF API	5 3/4"	3 1/2"	1 3/4"	1 3/8"	2 1/2"	1 7/16"	19"	4 5/8"	3 3/8"	96 lbs.	3-00508-120C
40,000 lbs.	200,000 lbs.	2 7/8" IF API	5 3/4"	3 1/2"	1 3/4"	1 3/8"	2 1/2"	1 7/16"	19 1/4"	5 1/8"	4 1/8"	94 lbs.	3-00508-120D
60,000 lbs.	300,000 lbs.	2 7/8" IF API	6"	3 1/2"	1 3/4"	1 3/8"	2 1/2"	1 7/16"	19 1/4"	5 1/8"	4 1/8"	96 lbs.	3-00508-130D
60,000 lbs.	300,000 lbs.	3 1/2" IF API	6"	3 1/2"	1 3/4"	1 3/8"	2 1/2"	1 7/16"	19 3/4"	5 5/8"	4 3/4"	96 lbs.	3-00508-130E
80,000 lbs.	400,000 lbs.	3 1/2" IF API	6 1/2"	4 5/8"	2 1/8"	1 3/4"	3 5/16"	1 7/8"	24 1/2"	5 5/8"	4 3/4"	180 lbs.	3-00508-140E
80,000 lbs.	400,000 lbs.	4 1/2" IF API	6 1/2"	4 5/8"	2 1/8"	1 3/4"	3 5/16"	1 7/8"	25 1/2"	6 1/8"	6 1/2"	180 lbs.	3-00508-140F
120,000 lbs.	600,000 lbs.	4 1/2" IF API	7 1/2"	5 1/2"	2 3/4"	2 1/8"	3 5/8"	2 5/8"	30"	6 1/8"	6 1/2"	250 lbs.	3-00508-160F
160,000 lbs.	800,000 lbs.	4 1/2" IF API	9"	6"	3 1/4"	2 1/2"	4 13/16"	2 3/4"	31 3/4"	6 1/8"	6 5/8"	390 lbs.	3-00508-180F