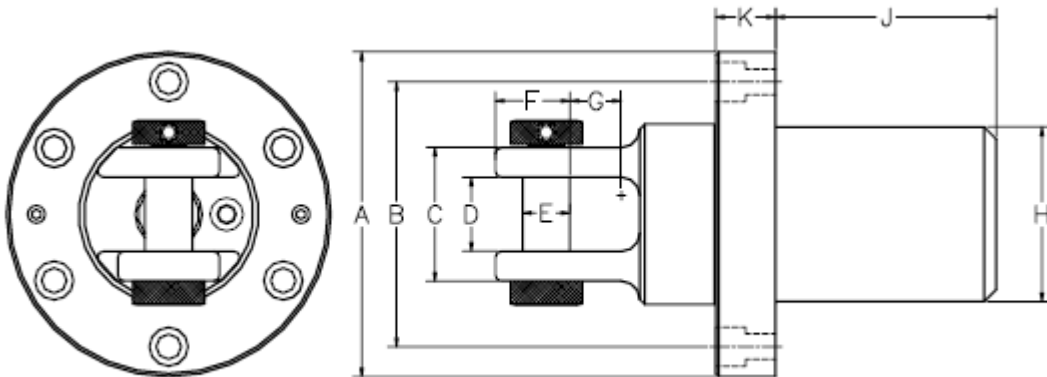




## DUB Swivel® Clevis x Flange



### Dub Swivels® - Clevis x Flange

<i>Safe Working Limit</i>	10,000 lbs.	20,000 lbs.	30,000 lbs.	80,000 lbs.
<i>Ultimate Load</i>	50,000 lbs.	100,000 lbs.	150,000 lbs.	400,000 lbs.
<i>A</i>	5"	6 1/8"	7 1/4"	9 1/2"
<i>B</i>	4"	4 7/8"	5 7/8"	7 3/4"
<i>C</i>	2 1/4"	2 3/4"	3 1/4"	4 5/8"
<i>D</i>	1 1/4"	1 1/2"	1 3/4"	2 1/8"
<i>E</i>	3/4"	1"	1 1/8"	1 3/4"
<i>F</i>	1 5/16"	1 5/8"	2 1/16"	3 5/16"
<i>G</i>	7/8"	15/16"	1 7/16"	1 7/8"
<i>H</i>	2 7/8"	3 5/8"	4 3/8"	6"
<i>J</i>	3 11/16"	4 5/8"	5 7/8"	8"
<i>K</i>	1 1/16"	1 3/8"	1 1/2"	2"
<i>Number of Holes</i>	6	6	6	8
<i>Flange Bolt</i>	3/8 UNC	1/2 UNC	5/8 UNC	3/4 UNC
<i>Net Weight</i>	15 lbs.	29 lbs.	51 lbs.	157 lbs.
<i>Part No.</i>	3-00508-605	3-00508-610	3-00508-615	3-00508-640