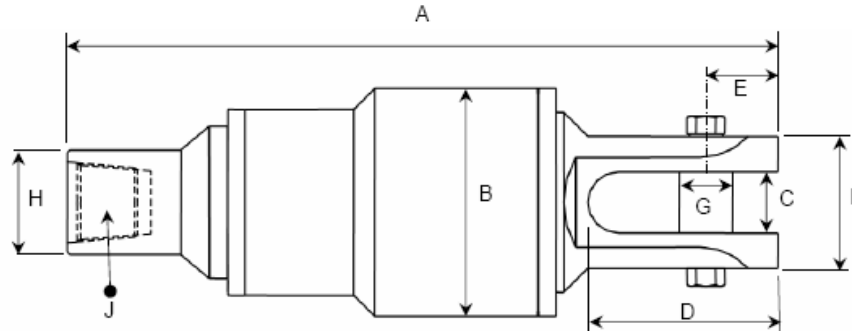




Century's Brewis Maxi Swivel



Maxi Swivel

Size	A	B	C	D	E	F	G	H	J	Bearing	Max Dynamic	Max Static	Part No.
44 US Tons mm in	610 24.02	165 6.50	54 2.13	160 6.30	62 2.44	126 4.96	44 1.73	120 4.72	3 1/2" IF	29412E	390 kN 44 Tons	915 kN 103 Tons	2-SW44
58 US Tons mm in	721 28.39	185 7.28	70 2.76	178 7.01	65.3 2.57	140 5.51	54 2.13	158.8 6.25	4 1/2" IF	29414E	520 kN 58 Tons	1250 kN 141 Tons	2-SW58
83 US Tons mm in	843 33.19	225 8.86	83 3.27	215 8.46	90.5 3.56	170 6.69	63 2.48	158.8 6.25	4 1/2" IF	29417E	735 kN 83 Tons	1800 kN 202 Tons	2-SW83
110 US Tons mm in	899 35.39	260 12.24	83 3.27	213 8.39	89.5 3.52	170 6.69	63 2.48	158.8 6.25	4 1/2" IF	29420E	980 kN 110 Tons	2500 kN 281 Tons	2-SW110
154 US Tons mm in	978 38.5	315 12.4	89 3.5	239 9.41	102 4.02	180 7.09	75.6 2.98	158.8 6.25	4 1/2" IF	29424E	1370 kN 154 Tons	3450 kN 388 Tons	2-SW154
210 US Tons mm in	1189 46.81	380 14.96	102 4.02	293 11.54	120.2 4.73	220 8.66	89 3.5	174.2 6.86	5 1/2" IF	29430E	1860 kN 209 Tons	5100 kN 573 Tons	2-SW210
265 US Tons mm in	1303 51.3	430 16.93	102 4.02	294 11.57	120 4.72	240 9.45	89 3.5	228.6 9.0	6 5/8" IF	29434E	2360 kN 265 Tons	6550 kN 736 Tons	2-SW265
320 US Tons mm in	1424 56.06	470 18.5	127 5.0	364 14.33	159 6.26	280 11.02	114 4.49	228.6 9.0	6 5/8" IF	29438E	2850 kN 320 Tons	8000 kN 899 Tons	2-SW320
382 US Tons mm in	1436 56.54	530 20.86	127 5.0	398 15.67	159 6.26	300 11.81	114 4.49	228 8.99	6 5/8" IF	29448E	3400 kN 382 Tons	10200 kN 1147 Tons	2-SW382
550 US Tons mm in	1642 64.65	600 23.62	156 6.14	330 12.99	190 7.48	322 12.68	150 5.91	228.6 9.0	6 5/8" IF	29456E	4900 kN 551 Tons	15300 kN 1720 Tons	2-SW550